

Elitmind for Sustainability

As we navigate the rapidly evolving landscape of **the digital era**, we understand that our **commitment to the planet** is as crucial as our dedication to cutting-edge IT solutions.

We have a complex **solution** for your organization.

We will guide you through **sustainability reporting** requirements and implementation.



Assess ESG maturity

Evaluate your ESG strategy

Optimize ESG Processes

Collect ESG Data

ESG reporting platform

Choose your path to a sustainable future with Elitmind's ESG Reporting & Sustainability Management



MATURITY ASSESSMENT

- Sustainability Maturity Assessment for organization
- Sustainability Management & ESG Reporting Consulting
- Training - individual, group, tailored to the industry



BUSINESS PROCESSES

- Sustainability Management processes evaluation
- Process optimization
- & documentation
- Data governance advisory services



DATA COLLECTION & AUTOMATION

- **Microsoft Sustainability Manager**
- Power BI Reports preparation
- ESG data collection app



Free Webinar

Navigating ESG Reporting: Data Automation & Collection

ESG Training

Knowledge and experience from **real-life projects** of Elitmind.

Subject matter **experts** in ESG, Data and AI.

Advice on how to address specific **business and technical challenges**.

It's time to **push #sustainability further** in your organization!

CONTACT US

andrzej.kazmierczak@elitmind.com

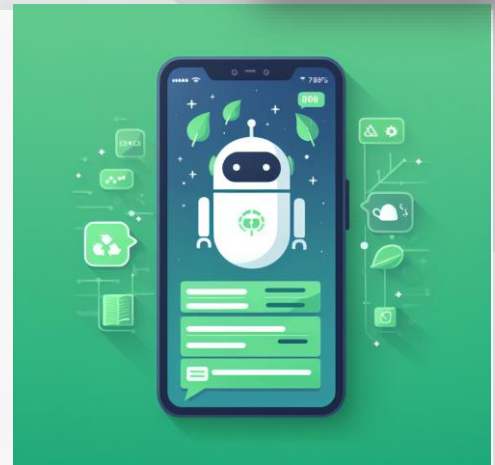
+971 50 470 8089



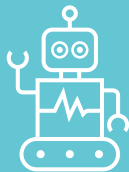


AI for Sustainability

#SustainableDubAI App by Elitmind combines fun challenges with education on individual impact. The App utilizes Artificial Intelligence to provide personalized feedback based on user preferences and goals. Gamification and social features motivate users and keep them on track.



Answer some questions



Dare to take customized challenges



Record the evidence



Check your impact



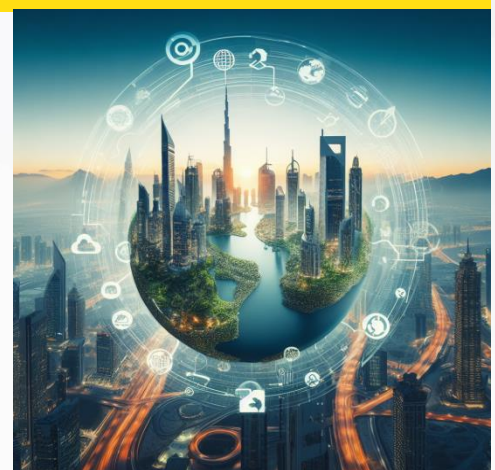
Share with friends



Create the team

Recognition, marketing, and business opportunities

- Follow Sustainability trends and requirements
- Improve environmental awareness and build excitement around sustainable lifestyle
- Become a leader in innovation and AI solutions
- Invite celebrities to take the challenge to make a bigger impact
- Introduce a points system for the winner to advertise the app and local attractions
- Cooperate with local businesses to create a discount system incentivizing users



It's time to **push #sustainability further** in your organization!



CONTACT US

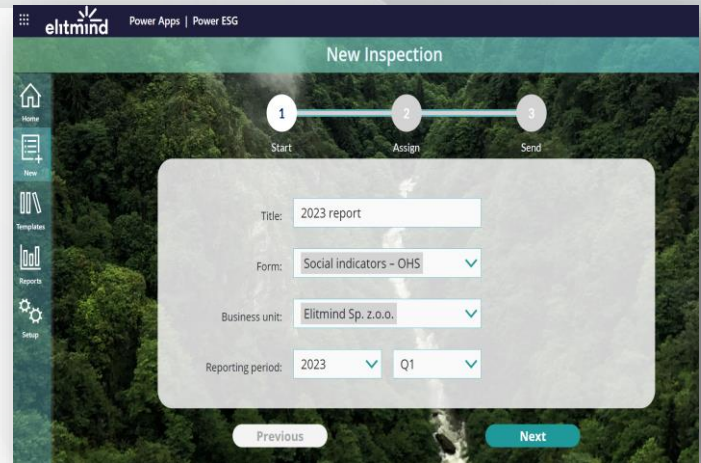
andrzej.kazmierczak@elitmind.com

+971 50 470 8089

App for Easy Data Collection in ESG Reporting

App supporting ESG reporting, tailored to your business.

ESG PowerApp supports the collection and validation of the required data and simple files, based on customized forms and flows. Check the process progress, dashboards with answer rates, and form statuses.



All ESG reports in one place

ESG reports are in one place for all stakeholders with no need to use additional tools.

Real-time KPI monitoring to support effective analysis and agile decisions.



Effective data collection

Distribution of the specific data request to relevant stakeholders with proper validation.

Collection of data (files or single data) with response rate tracking and automatic reminders.



Easy implementation

Cloud base, the data can be shared, and flow through different locations.

Based on Microsoft Power Platform, incorporating tools like MS Teams, MS PowerBI, MS SharePoint.



Customized workflows and forms

Predefined forms and workflows ensure fast readiness to use. Possibility to customize forms and workflows to align with the business processes.

How ESG Power App can support your business?

- Agility and customizability by combining default elements
- Business independent of the IT department
- “Pro” templates prepared by experts
- Low entry threshold - Power Platform license, Microsoft solutions
- Tool for data management not only for ESG reporting
- Audit proof



It's time to **push #sustainability further** in your organization!



Manage renewable energy distribution effectively while leveraging the Microsoft Azure technology



Do you want to drive **sustainable organization and become carbon neutral?**

As both sun and wind - the basis of **renewable Energy solutions** - are changeable, they are making power generation highly variable and dependent on multiple factors.



Our solution enables **mitigation of fluctuations** of renewable sources of energy, by establishing a network of warehouses that **absorbs excess energy and releases it when power is needed.**



Azure Machine Learning forecasting algorithms **accurately predict spikes in demand**, which helps **balance fluctuating energy levels.**



- ✓ Real-time management of renewable sources of energy.
- ✓ Mitigation of fluctuation of renewable power sources.
- ✓ Collecting, processing, and analyzing data from various sources.
- ✓ Business decision based on user-friendly Power BI dashboard.
- ✓ Accurate prediction of spikes in demand and stabilization of the power grid.
- ✓ Warehouses that absorb and release the power when needed.

Our AI and IoT-based Green Energy Analytics System

Solution Objectives

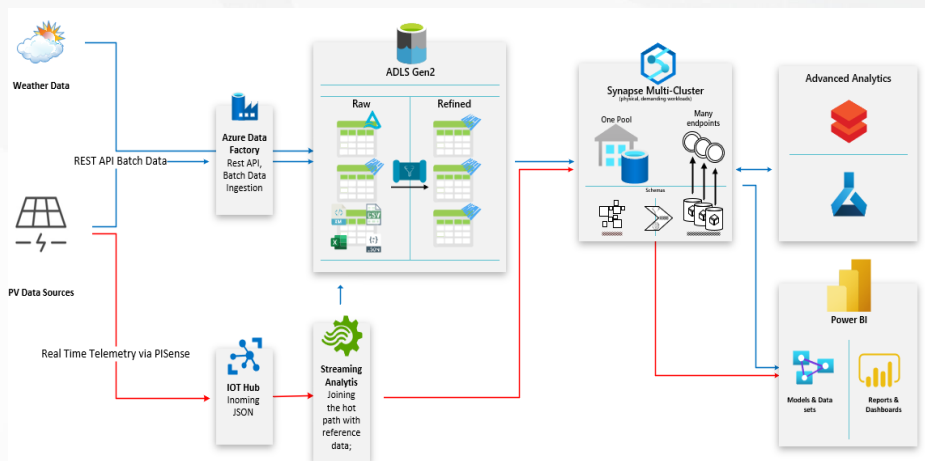
- **Reduce** the use of energy produced by conventional sources
- Introduce **Green Energy forecasting** to effectively manage supplies from renewable sources

Tactics

- Manage green energy levels and distribution using **Azure Machine Learning** capabilities
- Access **solar and wind energy production forecasts** via Power BI

Results

- **Real-time management** of dispersed green energy sources
- Flexibility and high performance at a reasonable cost



It's time to **push #sustainability further** in your organization!



CONTACT US

andrzej.kazmierczak@elitmind.com

+971 50 470 8089

ESG Reporting Readiness & Maturity

6-weeks Assessment by Elitmind

Depending on the company characteristics and location the ESG reporting requirements will be applicable sooner or later, so there is limited time to prepare for the inevitable.

ESG Reporting Readiness & Maturity

Assessment is the best approach to prepare your organization for the upcoming changes!



Sustainable Platform for Infrastructure transformation: enables the reduction of CO₂ emissions via cloud migrations.



Sustainable Operations: digitalized operations and online collaborative software that facilitates remote work & collaboration management.



Sustainable Ecosystem for societal development – emerging partnership on tech-enabling sustainability.



Microsoft Sustainability Manager offers comprehensive, integrated, and automated sustainability management enabling organizations to efficiently record, report, and reduce their emissions.

Do you want to drive sustainable organization?

Identify the areas in your organization that enable ESG reporting:

- Organization mapping
- Main stakeholders
- Regulatory requirements
- Reporting key indicators
- Reporting cycle
- ESG goals/targets
- Factor libraries needed
- List and specification of required data sources
- MS Sustainability Manager Proof of concept

It's time to **push #sustainability further** in your organization!

CONTACT US

andrzej.kazmierczak@elitmind.com

+971 50 470 8089



Microsoft Sustainability Manager

2 – 8 weeks Proof of Concept by Elitmind

Sustainability is good for business whether retail, manufacturing, financial services, energy, or the public sector. Multiple companies leverage technology to solve sustainability challenges. Quantifying the carbon emissions is only the beginning. The other areas include:

- **Sustainable Platform** which enables infrastructure transformation - reduction of CO2 emissions via cloud migrations.
- **Sustainable Operations** for fully digitalized operations and online collaborative software which remove the need for physical presence at specific work locations and reduce business travels and employee commuting.
- **Sustainable Ecosystem** for societal development based on technologies.



The benefits of using Microsoft Sustainability Manager include:



User-friendly interface and extensibility thanks to the foundation of bulletproof Microsoft Power Platform and Microsoft Power BI.



Dedicated and standardized Data & Calculation models based on good practices and standards for sustainability in greenhouse gas emissions area, set by the leading experts in the field, like IPCC and EPA.



Automation of manual processes of data ingestion, through a rich set of data connectors to multiple data sources such as files, databases, online services and other sources.

The process should start with identifying each organizational unit participating in the evaluation.

To ensure the process is efficient, the decision body should nominate the main stakeholders in the process, including the Sustainability/Regulatory Specialist who will lead the entire reporting activity.

There are a couple of mandatory steps to be successful:

- Data collection
- Data ingestion
- Calculation configuration
- Data reporting
- Results evaluation
- Goals' verification



It's time to **push #sustainability further** in your organization!

CONTACT US

andrzej.kazmierczak@elitmind.com

+971 50 470 8089

